

Changing the priority list of networks Mac OSX

- KEA PUBLIC: The Open Network
- KEA: The encrypted network logon and higher bandwidth.

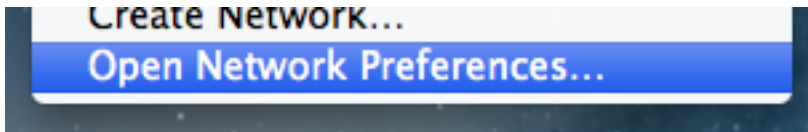
There are 5 steps in this guide.

If you have problems with your Mac keep connecting KEA- PUBLIC when the connection to KEA is interrupted.

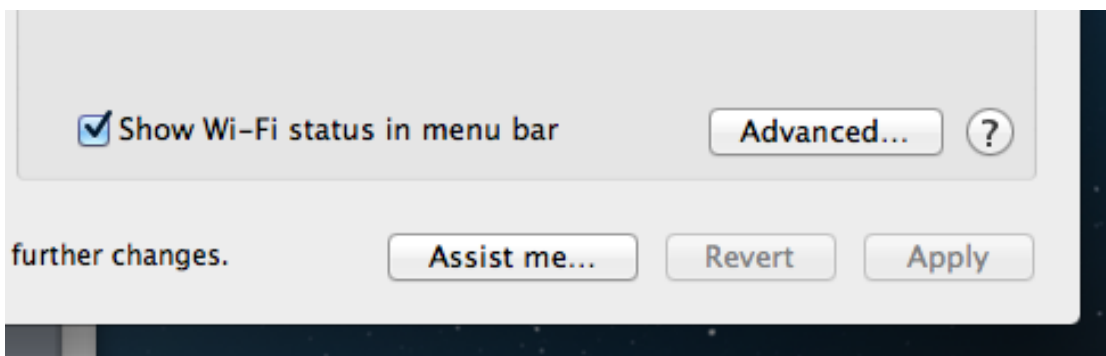
1. Find the Wi-Fi icon in the top right corner.



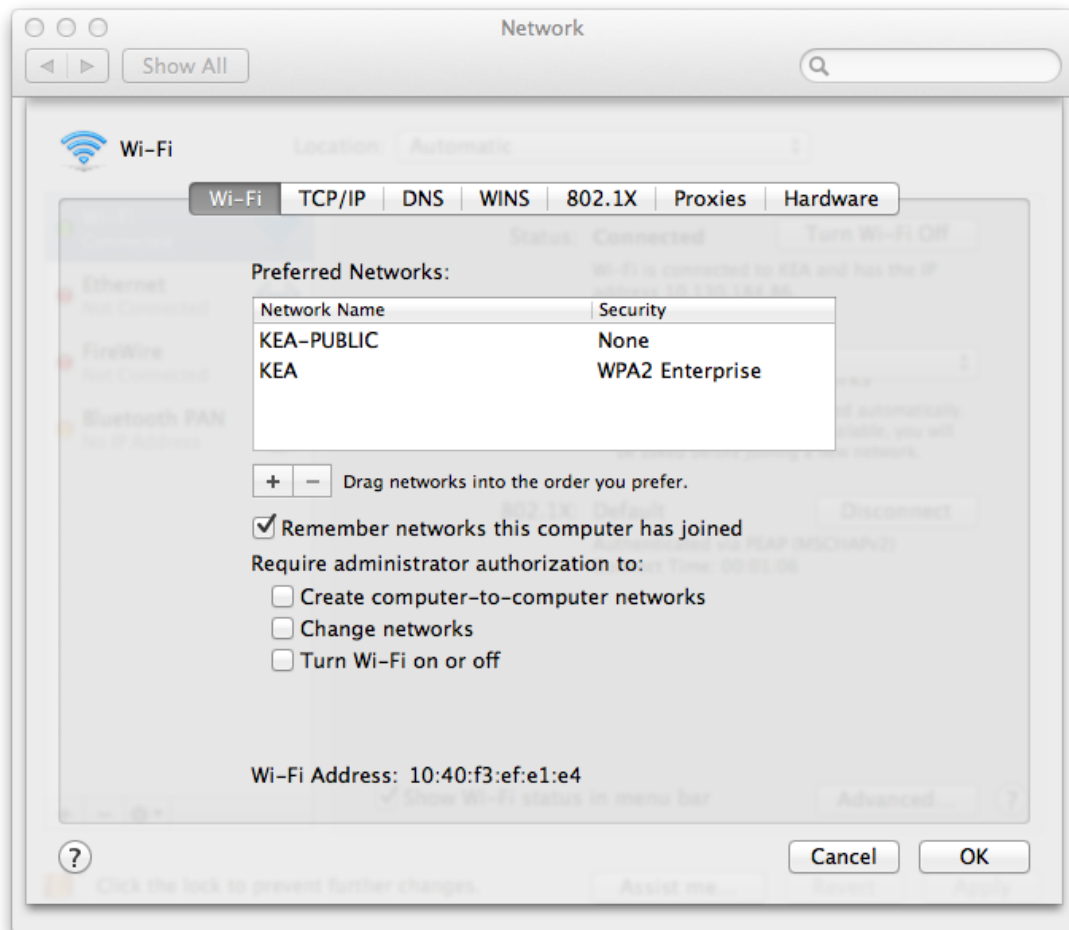
2. Select the bottom option



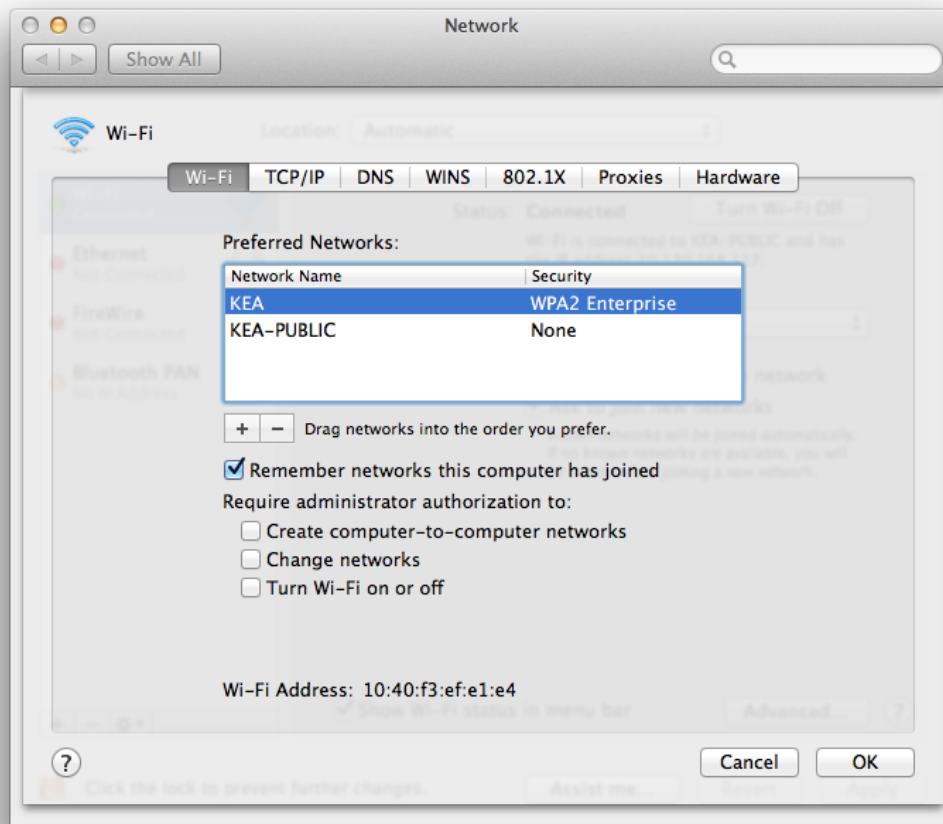
3. Select "Advanced"



4. In this menu, you can select which network to be prioritized. As for most, this computer will go on KEA PUBLIC, should the connection to the KEA be interrupted. You can either select KEA PUBLIC, and press the minus button, or you can drag & drop so KEA is above KEA PUBLIC.



5. The window should now look like this. With KEA standing above KEA PUBLIC. Displayed on the picture displayed underneath.



Now, your Mac should connect to KEA, rather than KEA PUBLIC.